

Doc M shower room pack

Introduction

The Inta Doc M shower pack complies with the approved Document M of the Building Regulations and BS8300:2009. The Inta Doc M shower pack provides both left and right hand layouts without the need to specify right or left hand assemblies*

*NOTE. The drawing on page 2 illustrated a left hand layout, for right hand layouts this must be reversed.



- Complies with document M of the Building Regulations and BS8300:2009
- Lantac approved pack
- TMV3 approved shower
- Operating pressure range of 0.2 to 5 bar
- Available in white or blue

Product Range

Description	Finish	Code No.
Doc M shower pack	White	DMPS902WH
Doc M shower pack	Blue	DMPS902BL



Doc M shower room pack

Pack Contents

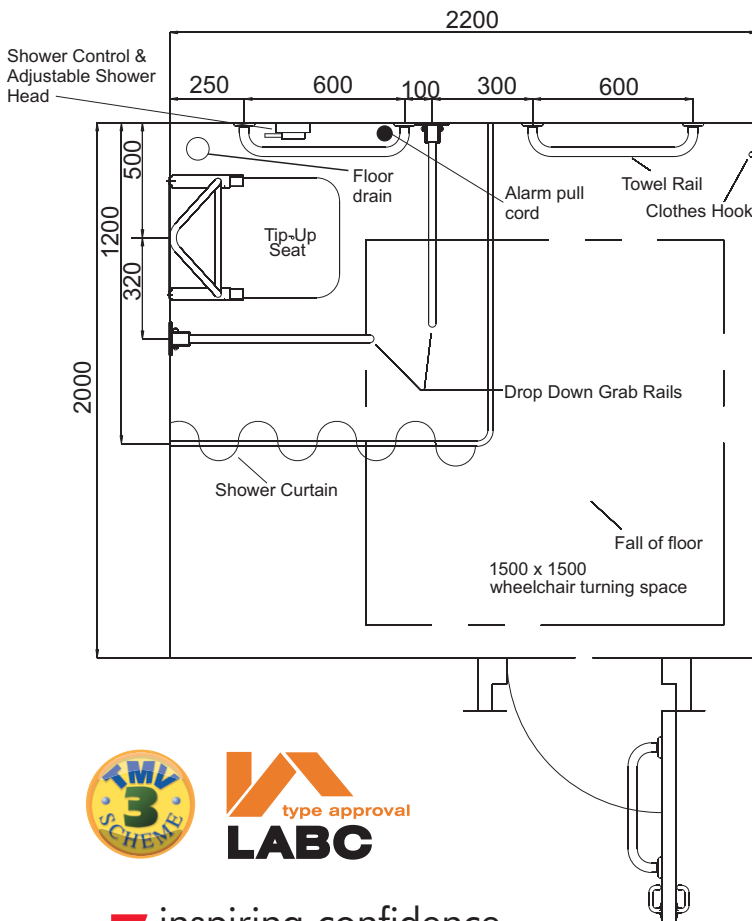
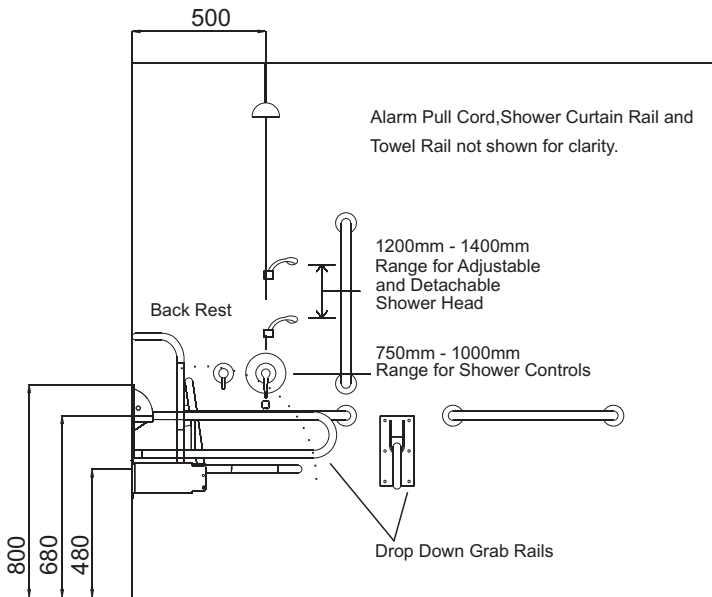
■ **Shower valve and kit -**

- Concealed shower valve
- Diverter
- Riser rail, hose, handset and overhead shower

■ **Shower seat with backrest**

■ **Rails -**

- Intacare 600mm support rails x 3
- Intacare 765mm hinged support rail x 2
- Intacare 450mm support rail x 1
- Retro hook x 1
- Shower curtain and rail
- 1200mm x 1200mm angled shower rail with ceiling support x 1
- 1000mm x 1200mm shower curtain x 2



■ inspiring confidence



Intatec limited,
Airfiled Industrial Estate,
Hixon,
Stafford
ST18 0PF

T. 01889 272180
F. 01889 272181

E. sales@intatec.co.uk

www.intatec.co.uk | www.antiscald.co.uk

www.intatec.co.uk
E&OE
06/2011